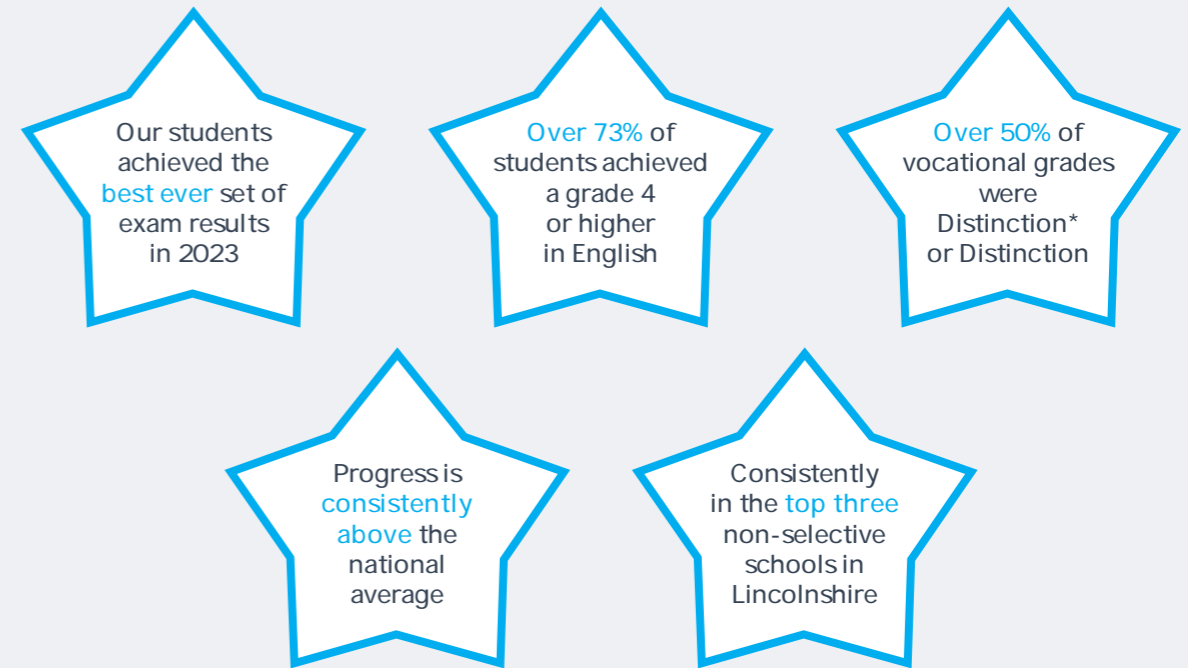




# PROSPECTUS

d  
Good  
Provid





### Our successful, oversubscribed school is based upon:

- High expectations, with a firm, fair and consistently applied code of conduct which is understood by students, teachers and parents/carers;
- Positive, high profile rewards based on outcomes that all students can achieve, including exemplary effort and behaviour and an outstanding rate of attendance;
- Strong, mutually supportive relationships between our students and their parents/carers;
- Developing students' confidence and self-esteem;
- A multi pathway curriculum designed so that each student can achieve their full potential in the core subjects together with a wide range of academic and vocational options;
- Providing appropriate support for students of all abilities;
- Working in partnership with our other Trust schools to further improve the school delivering the best outcomes for students;
  - A superb data and reporting system providing regular feedback to parents/carers on their child's progress against aspirational targets and on their attitude to learning;
- High quality, regular feedback to students, both written and oral, with readily accessible information on the next steps in their learning;
- High quality PSHE (Personal, Social, Health & Economic) and SMSC (Spiritual, Moral, Social & Cultural) programmes which equip our students for life in Britain in the 21st century;
- Investing wisely in the continuous upgrading of buildings, classrooms and facilities to provide our students with an vibrant and modern learning environment;



High SMS



## Key Stage 3

Key Stage 3

Key Stage 3 aims to provide a secure foundation of knowledge, skills and understanding before specialising at Key Stage 4.

Year 7 students are taught in mixed ability groups in the first term, then at the end of September, teacher assessments will be used to set students new timetables which will remain for the rest of Year 7.

Students are continually assessed to ensure they remain in the most appropriate group.

At Key Stage 3, students will have a timetable made up of the following subjects:

- English
- Mathematics
- Science
- Art & Design
- Citizenship
- Drama
- Food Technology
- French
- Geography
- History
- ICT/Computing
- Music
- PE
- Religious Studies

“My child has been made to feel valued and happy as well as feels his opinions matter, which is important.”

B3D7@F 8776435=

## Key Stage 4

Key Stage 4

During Year 9, students will choose from a mix of academic, technical and vocational subjects to study in Years 10 and 11.

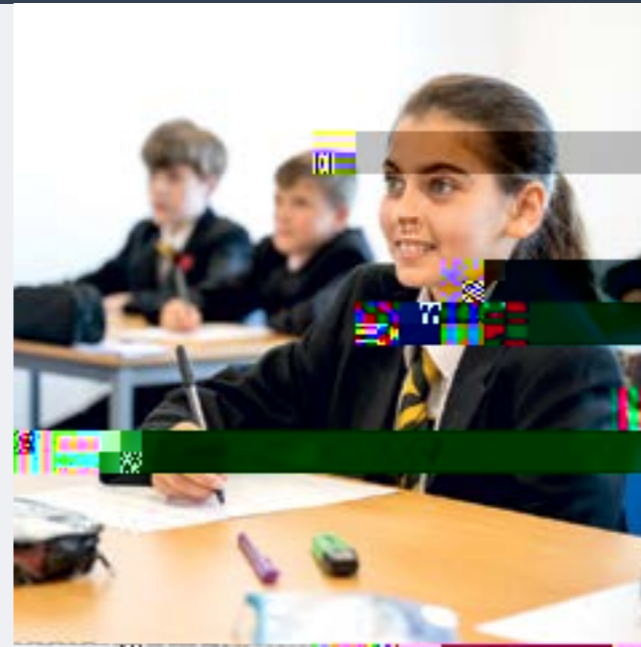
At Key Stage 4, all students study and take GCSE examinations in the subjects of:

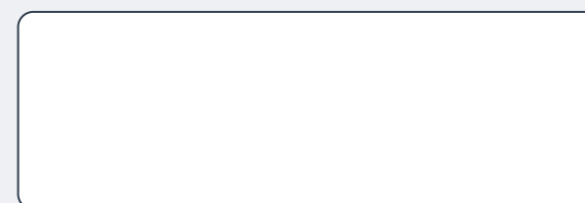
- English Language and English Literature
- Mathematics
- Science

One hour of PE is also included in the timetable for all students.

Students can then choose from a range of GCSE and BTEC subjects, which currently include:

- 3D Art & Design
- Art & Design
- Business Studies
- Digital Information Technology
- Food Preparation & Nutrition
- French
- Geography
- Health & Social Care
- History
- Music
- Performing Arts
- Religious Studies
- Sport Science
- Statistics
- Travel & Tourism







# Transition and key dates

We will work with you to ensure that your child has a smooth transition to our school during this exciting and anxious time for your family.

## Open Evening

Our Open Evening is for students in Years 4 to 6 and their parents/carers to visit the school and see everything our school has to offer. This event takes place in the autumn term, therefore conveniently timed before making your application to school.

## Application deadline

Applications to Spalding Academy will need to be made to Lincolnshire County Council by 31st October (this is the same date every year). Due to the high demand for places at our school, we strongly advise that you put Spalding Academy down as your first choice.

## National Offer Day

National Offer Day on 1st March is the date when Lincolnshire County Council will send out details of which school your child has been allocated to start in September. You will then have a dedicated member of staff at Spalding Academy to liaise with before starting school.

## Transition pack

Every student who has been offered a place to join Spalding Academy will receive a special transition pack, which will contain useful information for parents/carers and students. We also include some special treats inside as well.

**“Students’ behaviour is a strength of the school.”**

OFSTED INSPECTION 2019

## Primary school visits

Our Transition Team will visit your child’s primary school in the summer term to talk about your child’s strengths and any particular needs they may have as well as clubs and interests. Your child will be informed about what to expect at Spalding Academy and how it differs from primary school.

## Taster Day

In July, your child will take part in a variety of lessons and activities plus they will be able to have lunch in the canteen if they wish.

## Induction Day

We stagger the start of term in September so Year 7 students start a day before other Year groups, which helps new students familiarise themselves with the school. The first part of the day will be spent in tutor groups, looking at timetables and other settling in tasks. The students will spend the rest of the day in their lessons, meeting their teachers and finding out about each other.

## Starting school in September

We have a full programme of activities in place for when students start school in September to help them get to know each other, make new friends and quickly settle into school life.

# How the academy day is structured

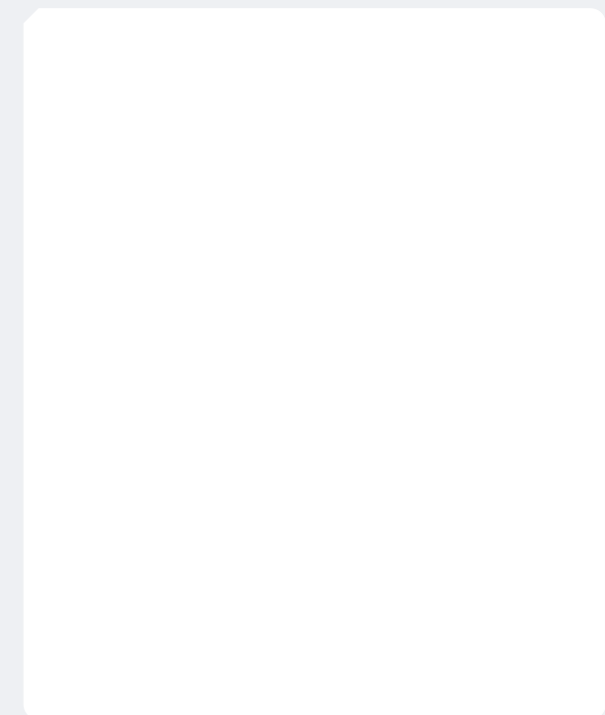
The academy day is structured with four lessons in the morning and one in the afternoon. This is to improve the learning of our students by maximising the amount of morning learning time.

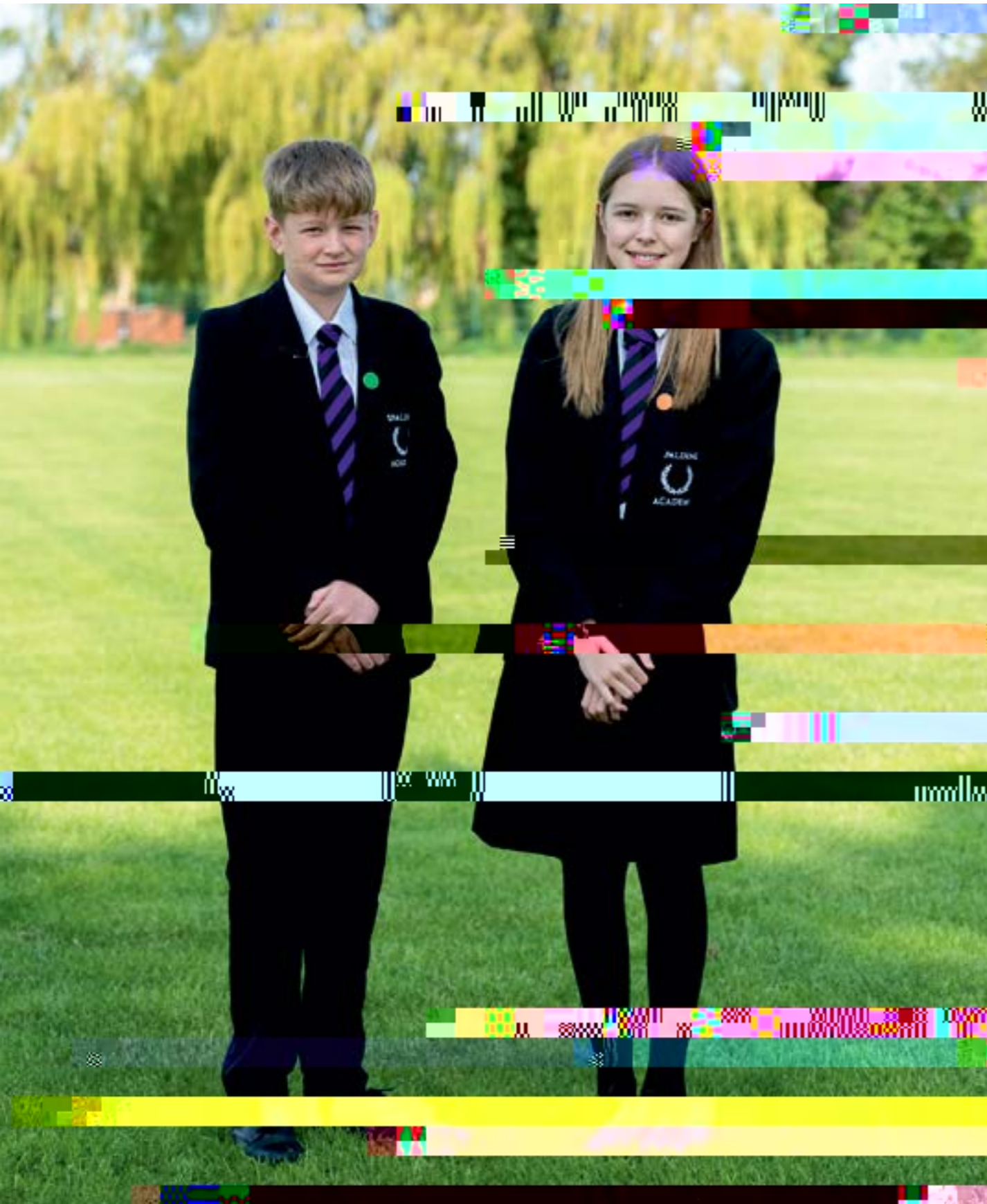
At morning break and lunchtime, each Year group have their very own yard, which is fully supervised by the Pastoral Year Lead and teaching staff. There are additional food outlets located in the yards.

During lunchtime and after-school there is an extensive extra-curricular programme to allow our students to develop new interests and enhance the knowledge learnt in the classroom.

Learning continues in the Registration / Assembly / PSHE sessions with a variety of different activities timetabled every day.

Visit [www.spaldingacademy.org.uk/term-dates](http://www.spaldingacademy.org.uk/term-dates) for term dates.

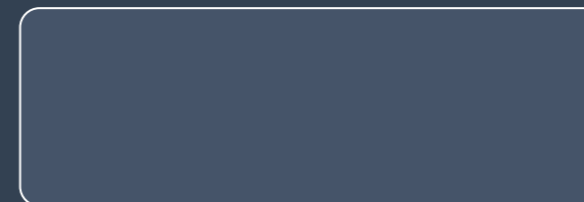




# The school uniform

The way that students dress is important to create a smart, disciplined and purposeful academic environment, and as role models to promote the public image of Spalding Academy in the wider community.

The school uniform is a symbol of community.







# Bourne Academy Sixth Form

Bourne Academy has a large Sixth Form with its very own purpose-built Sixth Form Centre that also welcomes students from Spalding Academy, Cowley Academy and other secondary schools across Lincolnshire and Rutland.

There are a variety of different study pathways where students can choose either 3 or 4 A-levels, 3 or 4 BTEC vocational qualifications or 'mix and match' a combination of both A-level and BTEC qualifications. This enables every student to choose the best subject options available.

The current choice of A-level and BTEC subjects include:

- Applied Science
- Art & Design
- Biology
- Business
- Chemistry
- Creative Digital Media Production
- English Language
- English Literature
- Further Maths
- Geography
- Health & Social Care
- History
- Information Technology & Computing
- Modern Foreign Language